



ULMA CONSTRUCTION

CORPORATE PRESENTATION

It's **all** about **trust**

ULMA CONSTRUCTION

We provide comprehensive construction solutions for both sale and rent, including formwork, climbing, shoring, and scaffolding systems, designed for use on buildings, civil works, industrial and restoration projects. The knowledge gained through our extensive experience in the field allows us to offer our customers world-class service.



2.043

Employees throughout
the world



290 M€

Total sales



60

Years in the industry



+50

Countries



ULMA GROUP

ULMA is one of the largest business groups in northern Spain. With 60 years of experience, we have a longstanding dedication to innovation, job creation, and the provision of added value for our clients. ULMA Group is at the cutting edge of technology and the most advanced and optimised working processes.



5.110

People working in the group



911 M€

Total sales



+80

Countries, on all five continents



9

Commercial enterprises

**Better
Together**

ULMA GROUP

The ULMA Group operates a coordinated structure of diversified and independently managed businesses, which share a common mission, general policies and strategy, acting as cohesive and developmental elements of the group's business project.



ULMA
AGRÍCOLA



ULMA
ARCHITECTURAL SOLUTIONS



ULMA
CONSTRUCTION



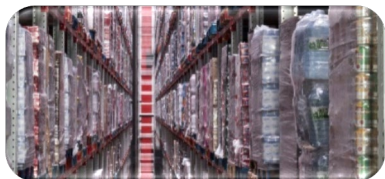
ULMA
CONVEYOR COMPONENTS



ULMA
EMBEDDED SOLUTIONS



ULMA
FORGED SOLUTIONS



ULMA
HANDLING SYSTEMS



ULMA
PACKAGING



ULMA
SERVICIOS DE MANUTENCIÓN

ULMA, CULTURE OF COOPERATION

Since our foundation, inter-cooperation and social responsibility have been in our DNA, as fundamental values of the MONDRAGON cooperative movement. We are proud to share these unique values with more than 80,000 people from 276 companies and entities from very diverse sectors. We also collaborate with common entities, such as the Research Centers and the MONDRAGON University, which encourage us to be more competitive in our respective markets.



UNIVERSITY

5,200

MONDRAGON University students are trained in various fields, including engineering, energy, business management, marketing, entrepreneurship and leadership, among others.



RESEARCH

15

Technology centers IKERLAN, ETIC Microsoft, LORTEK, IDEKO, EDERTEK, and more.



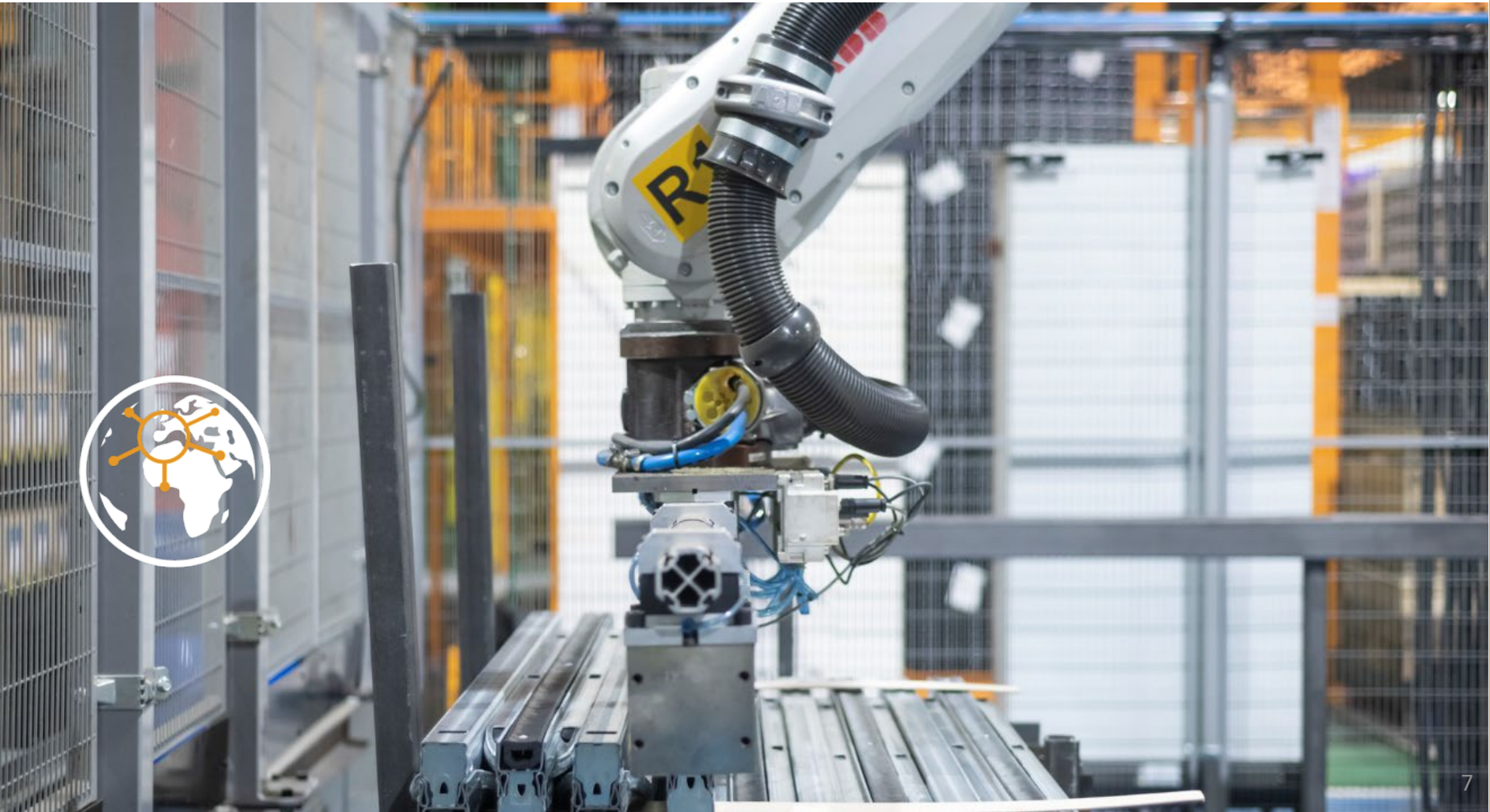
60 YEARS OF EXPERIENCE

With 60 years in business, backed by the trust of our customers, ULMA provides innovative and efficient building solutions, personalised from the beginning of the project, which encompass technical design, material provisioning, and worksite supervision.

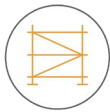


IN-HOUSE PRODUCTION & ENGINEERING

We have one of the largest manufacturing plants in Europe, with a surface area of 57,500 m², where every day we produce thousands of products designed for all manner of construction projects. All production processes are automated and supervised by highly qualified personnel.



MORE THAN JUST A PRODUCT, WE OFFER COMPREHENSIVE SERVICES



ENGINEERING & TECHNICAL SERVICE

- *Project Management: support in winning new projects, performing technical studies, planning, and assessment.*
- *Engineering team highly capable in multiple disciplines and distributed throughout various markets.*
- *Experts in construction products and processes. Each study project take into account the requirements at every phase of construction.*
- *Building solutions that are reliable, high-quality, efficient, and 100% safe.*



RESPONSE CAPACITY

- *In-house fabrication. Guaranteed safety, with reliable quality of both products and services.*
- *Worldwide logistical and technical-sales networks offering comprehensive services within the delivery times set by customers.*
- *Depot facilities in major cities throughout the world.*
- *Material delivery within the agreed deadlines.*
- *Friendly, accessible, transparent and trustworthy service.*



ON THE JOBSITE

- *Support, assistance, and supervision on-site.*
- *Project oversight according to the highest safety standards.*
- *Training courses for site personnel.*

DIGITAL SERVICES



BIM: More than just design

- *Close collaboration with our clients, and the application of new technologies: to improve productivity reciprocally, share information transparently, and establish lasting relationships based on trust.*
- *Plan, manage and perform a virtual monitoring of each phase of the project to ensure the productivity of the work.*
- *ULMA Studio: library of our 3D formwork and scaffolding systems.*



myULMA: Anywhere, anytime

- *Gain access to all of your project's information and documentation.*
- *Available 24/7 from any device anywhere in the world.*



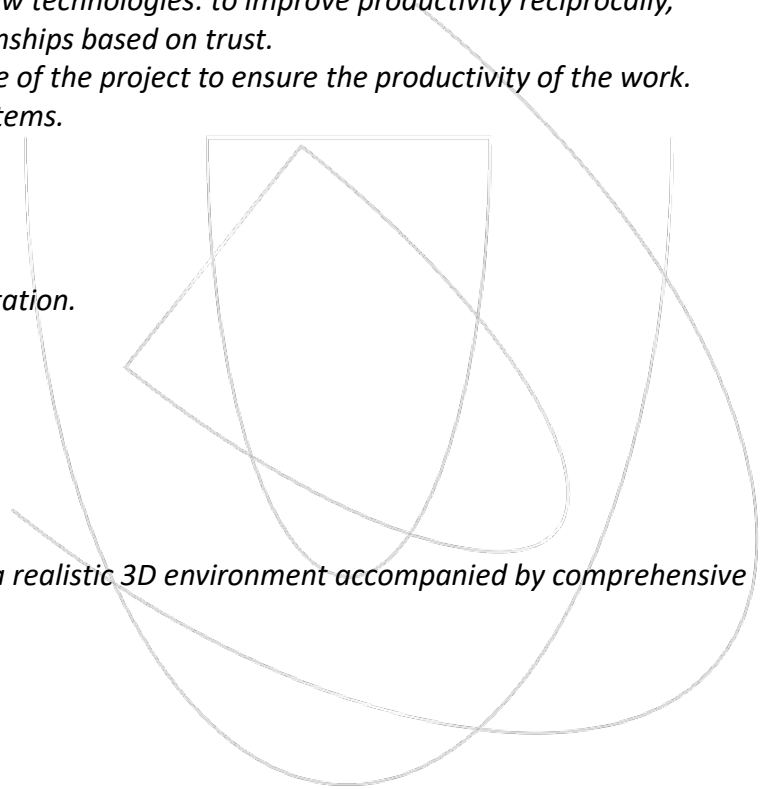
SCAFFMAX: Scaffolding configurator

- *Software is easy and intuitive to use.*
- *A configurator that allows the scaffolding to be visualized in a realistic 3D environment accompanied by comprehensive plans and material lists.*



LASER SCANNING, Measurement and precision

- *We reduce the time needed for measurement, while improving precision.*
- *This technology improves logistics and material calculations, thereby resulting in significant cost savings.*



FIRST, SAFETY

Safety is a priority when designing the products and solutions of each project, as well as during the assembly, whilst carrying out the work and when dismantling the products.



ON-SITE SAFETY

- Continued on-site assistance
- Pre-assembly services for complex formwork units



DOCUMENTATION

- User Guides, Technical Assembly Instructions, Product activities and events, etc.



ULMA SAFETY SYSTEMS

- Development of safety solutions
- Products tested in real construction site situations
- Certifications



ERGONOMIC SOLUTIONS

- Ground level pre-assembly jobs
- Ergonomic product movement
- Light and easy to handle materials



INNOVATION AND TECHNICAL CAPACITY

Listening to and working alongside our customers, during project development as well as on the jobsite, is what allows us to continue designing products and solutions that evolve, offering ever more profitability and safety for the user.



CONTINUOUS IMPROVEMENT THROUGH R&D

3,5%

*R&D expenditure
(% of consolidated turnover)*

45

*Number of
Patents granted*

5

*Number of Patents
Applied this year*



ENGINEERING TEAMS WORLDWIDE

40

*Number of
R&D Engineers*

500

*Number of
Application Engineers*



CERTIFICATIONS

All products and systems certified by the competent authorities.



COLLABORATIONS

- **Universities:** Mondragon Unibertsitatea (School of Engineering), University of Cantabria (School of Civil Engineering), University of Navarra (School of Engineering), University of Deusto (School of Engineering).
- **Research centers:** IK4-Tekniker, IK4-Ikerlan, IK4-Gaiker, IK4-Cidetec, Sigma Karlsruhe GmbH.

INNOVATIVE SYSTEMS

A unique range of top products perfectly adaptable to any terrain, environment and type of construction is well prepared to give solutions to any construction project.



—
**WALL AND COLUMN
FORMWORK**



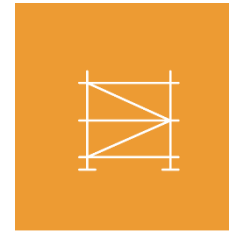
—
**CLIMBING
FORMWORK**



—
**SLAB FORMWORK
AND LIGHT SHORING**



—
**CIVIL ENGINEERING
SYSTEMS**

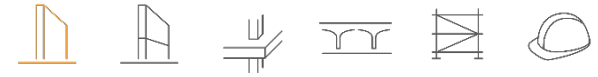


—
SCAFFOLDING



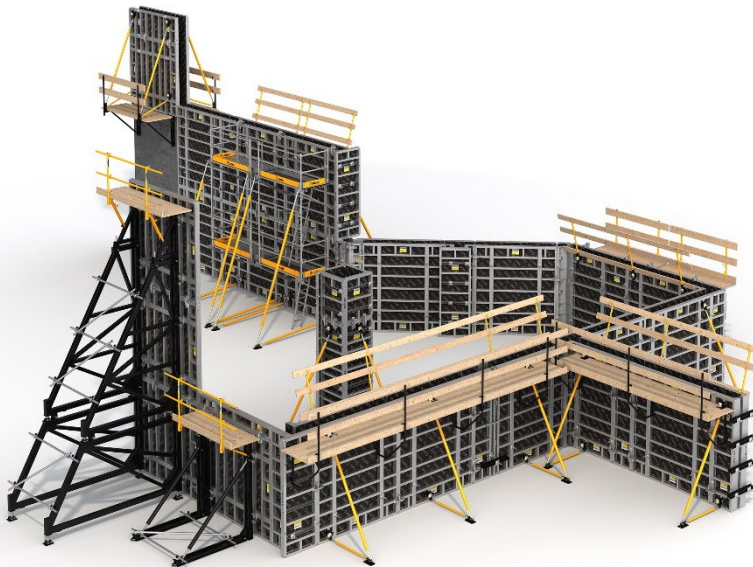
—
**SAFETY
SYSTEMS**

INNOVATIVE SYSTEMS



WALL AND COLUMN FORMWORK

A wide range of fully certified products and solutions, all offering complete safety and excellent finishes.



MODULAR FORMWORK

High-strength, quality design, and superior production standards. Easy to use and fully reusable.

ORMA, BATEK, LGW, NEVI, COMAIN, BIRAMAX



TIMBER OR METAL BEAM FORMWORK

Excellent finishes for any geometry under any conditions.

ENKOFORM VMK, ENKOFORM V-100

INNOVATIVE SYSTEMS



WALL AND COLUMN FORMWORK

A wide range of fully certified products and solutions, all offering complete safety and excellent finishes.



COLUMN FORMWORK

Efficient assembly, high strength, completely reusable, and excellent finishes.

LGC, CLR, LGR, F-4 MAX, ORMA

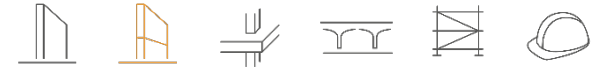


SINGLE-SIDED FORMWORK

High-performance modular solution for even the tallest of walls.

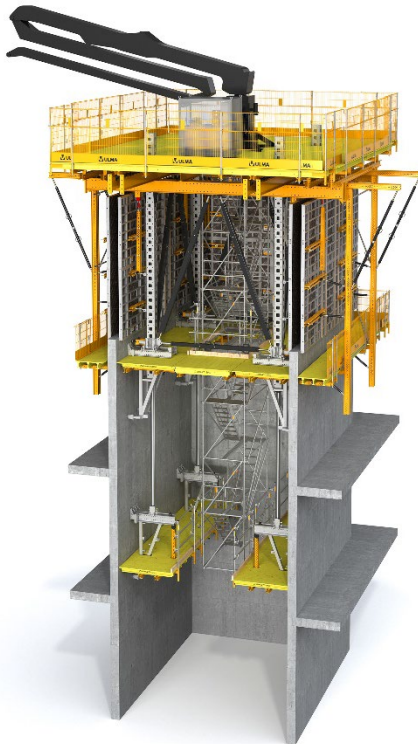
UCAB-EUC, SMK

INNOVATIVE SYSTEMS



CLIMBING FORMWORK

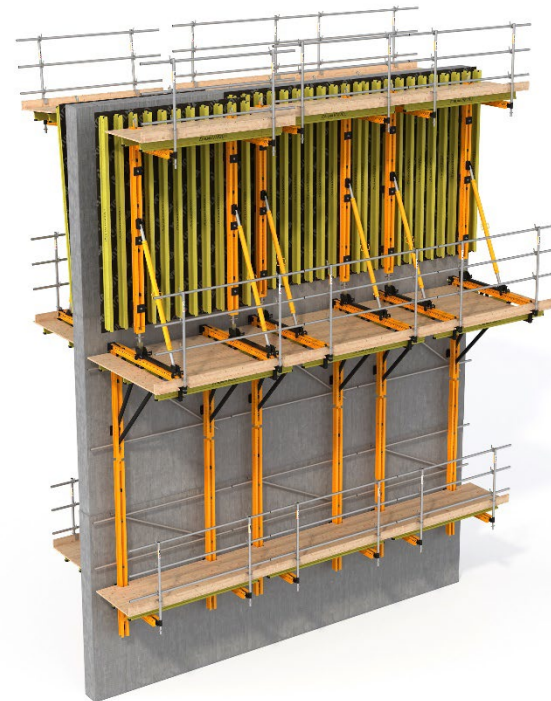
Extremely versatile solutions with integrated safety components offering complete protection.



SELF-CLIMBING SYSTEMS

Hydraulic advance renders crane assistance unnecessary, providing considerable savings through reduced cycle times.

ATR, RKS



CONVENTIONAL CLIMBING SYSTEMS

Single-sided or two-sided formwork lifted by crane.

BMK, CR-250, BF-170, SBF-185 / SBM-240, SBD-170, KSP

INNOVATIVE SYSTEMS



SLAB FORMWORK AND LIGHT SHORING

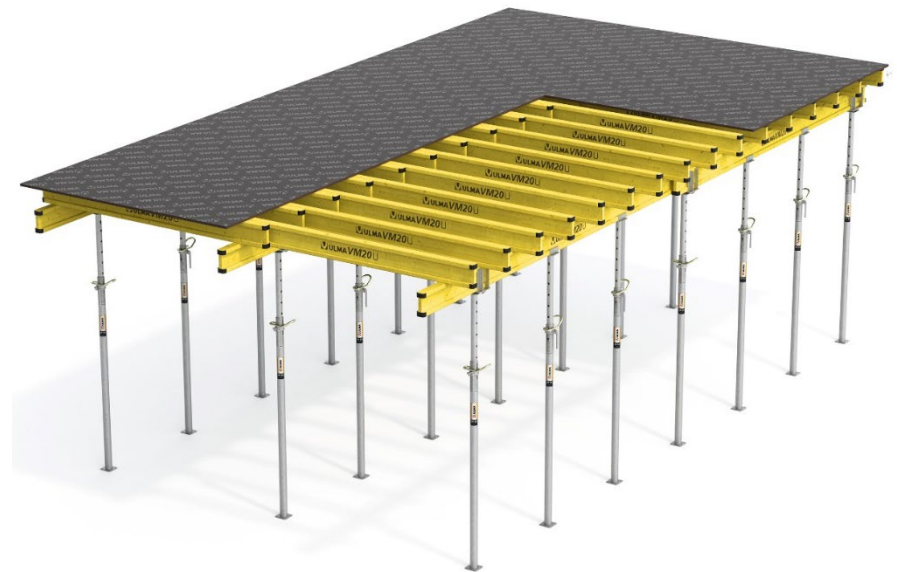
The highest safety and quality standards. Certified products.



MODULAR FORMWORK

Reusable, lightweight, and extremely durable systems offering streamlined assembly and disassembly.

CC-4, VR Table, ONADEK, RAPID, RECUB



TIMBER OR METAL BEAM FORMWORK

Excellent finishes for any geometry under any conditions.

ENKOFLEX, BTM

INNOVATIVE SYSTEMS

SLAB FORMWORK AND LIGHT SHORING

The highest safety and quality standards. Certified products.



PROPS AND FALSEWORK

Wide range of products in a variety of classes to provide different load-bearing capacities, all offering high performance and adaptability to project requirements.

ALUPROP, European prop, Telescopic prop, T-60 shoring, BRIO shoring, G shoring

INNOVATIVE SYSTEMS



CIVIL ENGINEERING SYSTEMS

Integrated components offer high levels of safety for this wide range of fully-configurable modular systems and solutions, all of which require minimal special pieces.



FORMWORK FOR BRIDGES (slab formwork, formwork carriers, shoring)

Cantilever form carriers, deck flange form carriers, and parapet form carriers, all with hydraulic advance systems adaptable to any deck geometry.

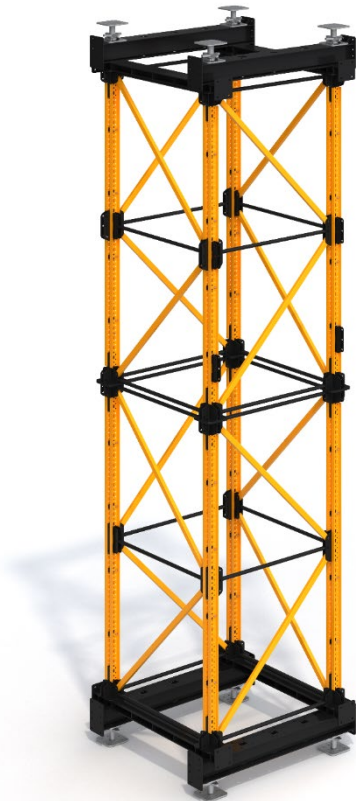
ENKOFORM HMK, MK Truss, H-33 Truss, HC Bracket, Deck flange form carriage, Parapet form carriage, CVS carriage

INNOVATIVE SYSTEMS



CIVIL ENGINEERING SYSTEMS

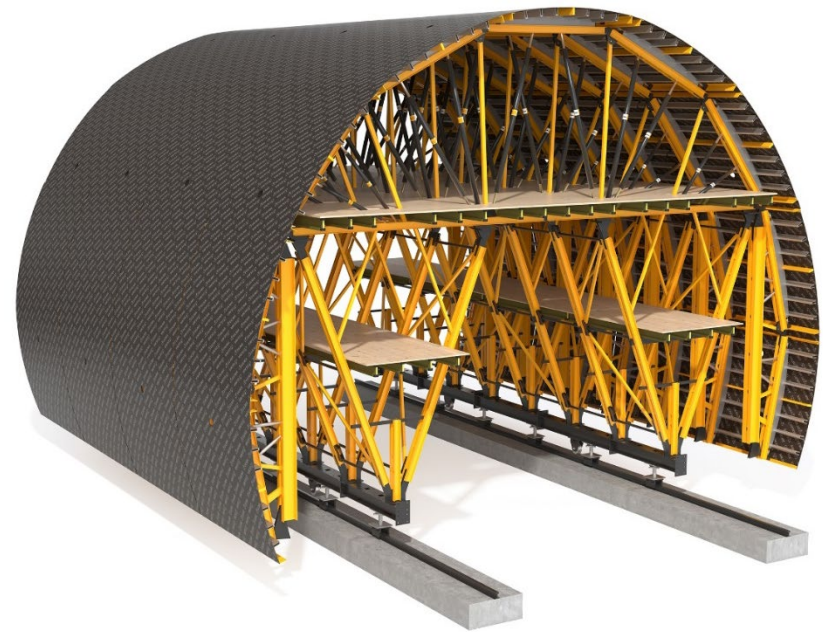
Integrated components offer high levels of safety for this wide range of fully-configurable modular systems and solutions, all of which require minimal special pieces.



HEAVY DUTY SHORING SYSTEMS

Adaptable, high-performance, and easily assembled systems with load-bearing capacities up to 800 kN per footing.

MK Shoring, T-500

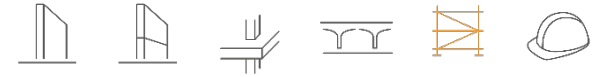


FORMWORK FOR MINE OR CUT-AND-COVER TUNNELS: MK Carriages

Extremely versatile systems equipped with hydraulic advance, suited for any tunnel geometry.

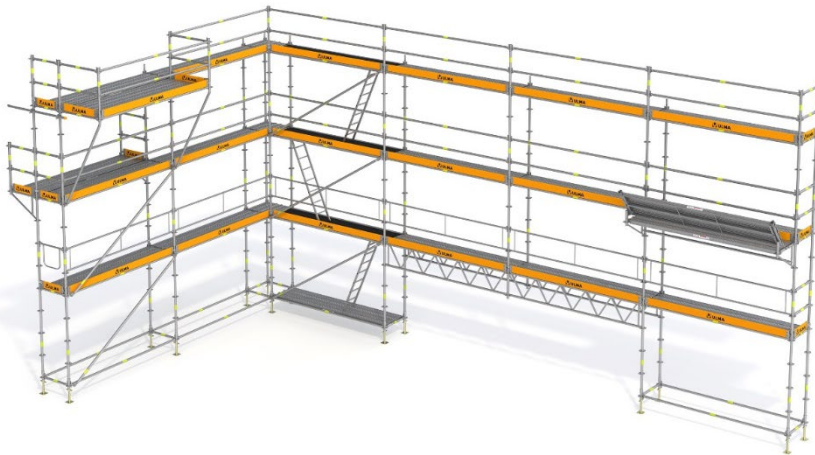
MK carriages for mine tunnels and cut-and-cover tunnels

INNOVATIVE SYSTEMS



SCAFFOLDING

Certified products, designed and fabricated to the highest quality standards. Bespoke solutions provide complete safety for any geometry.



FAÇADE SOLUTIONS

*Multidirectional scaffolds with streamlined assembly provided by simple fast-action joints.
Façade scaffolding / irregular geometries, Circular solutions, Stabilization of façades*



WORKING PLATFORMS AND ACCESS SOLUTIONS

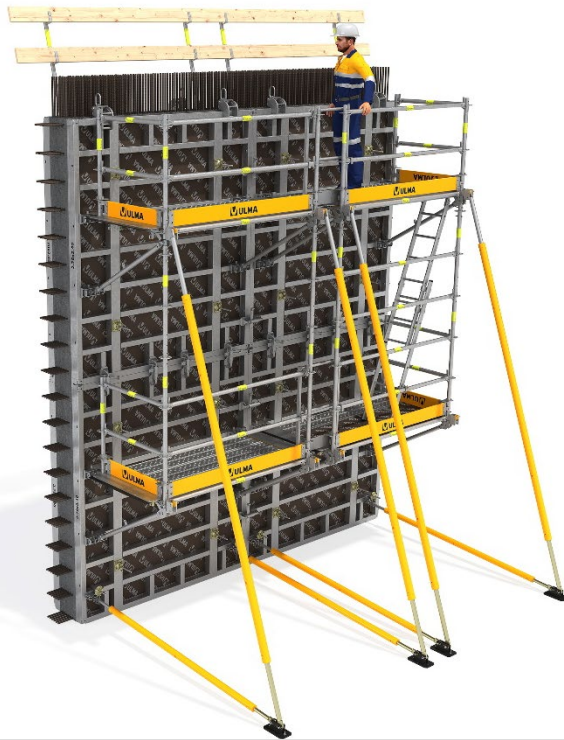
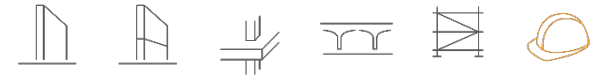
*Wide range of components for use on any project.
Access stairs, Towers, Scaffolding for industry, Temporary roofs, Roof edge protections, Footbridges / public staircases, Hanging scaffold, Mobile trolleys, Leisure and entertainment applications*

INNOVATIVE SYSTEMS

SAFETY SYSTEMS

Certified products. Designed and fabricated to the highest quality standards.

WORKING PLATFORMS FOR WALL AND COLUMN SYSTEM



SBU PLATFORM

Galvanised metal platforms with safe access designed for work at height on wall formwork in complete safety.



UNIVERSAL COLUMN PLATFORM

Safety item for the pouring works of concrete columns.

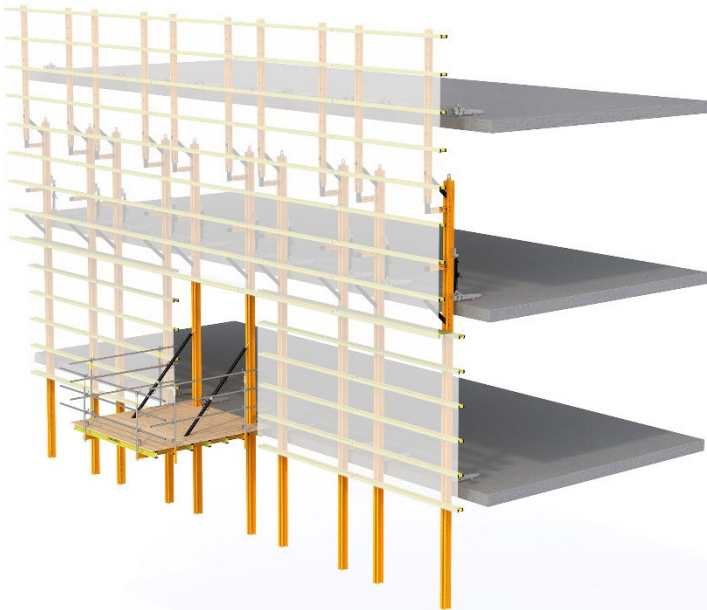
INNOVATIVE SYSTEMS



SAFETY SYSTEMS

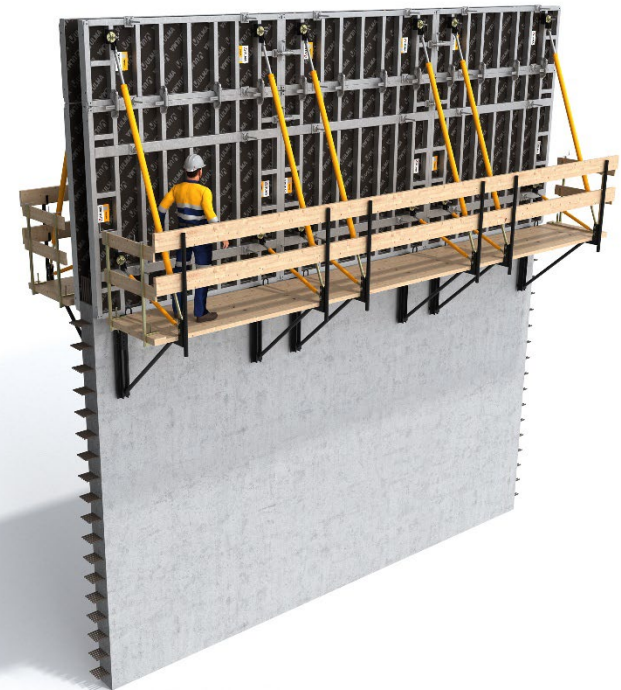
Certified products. Designed and fabricated to the highest quality standards.

PERIMETER PROTECTION



HWS PERIMETER SAFETY SCREEN

*Safety component for high-rise building perimeters.
Covers the floor under construction and the
floors immediately below.*



BF-170 PERIMETER PLATFORM

*Ensures safety for works at height having incorporated all
necessary elements.*

INNOVATIVE SYSTEMS

SAFETY SYSTEMS

Certified products. Designed and fabricated to the highest quality standards.

SLAB FORMWORK EDGE PROTECTION SYSTEMS



HANDRAILS, SAFETY NETS, SARE, MBP etc.

Provisional fall prevention systems for slab edges suitable for both personnel and material.



TROLLEY AND LIFTING FORK

Elements to transfer tables on ground and with crane.

ULMA PROJECTS



THE BROOKLYN TOWER
USA



ULMA PROJECTS



TS-32 TUNNEL
POLAND



ULMA PROJECTS



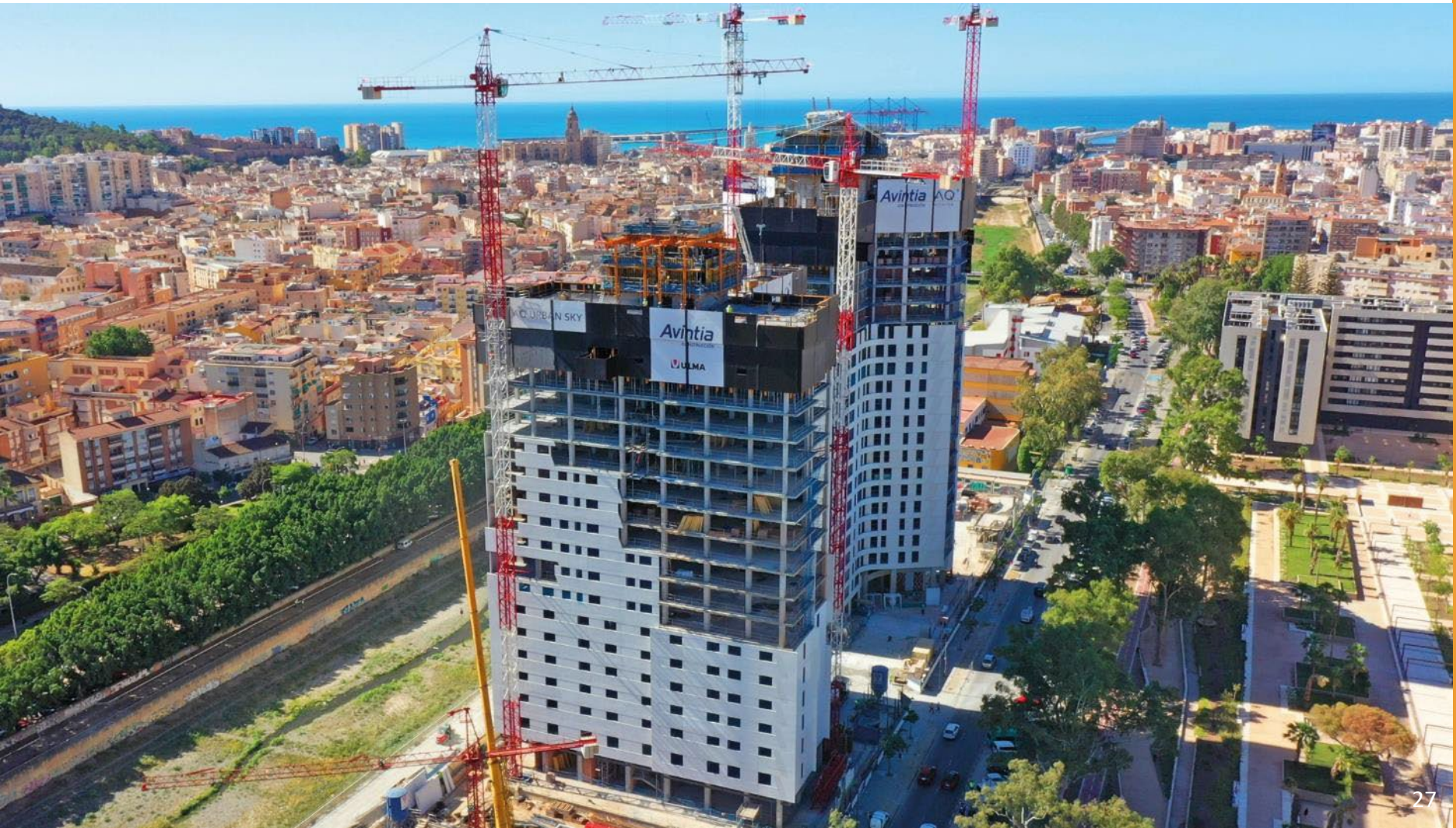
CRISTO REI CATHEDRAL
BRAZIL



ULMA PROJECTS



MARTIRICOS TOWER SPAIN



ULMA PROJECTS



BRIDGE OVER THE NERIS RIVER
LITHUANIA



ULMA PROJECTS



CASAHUIRI TUNNEL
PERU



ULMA PROJECTS



MAXIMALL POMPEII SHOPPING CENTER ITALY



ULMA PROJECTS



LOS PUERCOS BRIDGE
CHILE



ULMA PROJECTS



MIGUEL HIDALGO REFINERY
MEXICO



ULMA PROJECTS



FREIXO VIADUCT, EVORA LINE, INFRAESTRUTURAS DE PORTUGAL
PORTUGAL



ULMA PROJECTS



**GUSTAV EPPLER BUILDING
GERMANY**



ULMA PROJECTS



SANTU MARE BRIDGE ROMANIA



ULMA PROJECTS



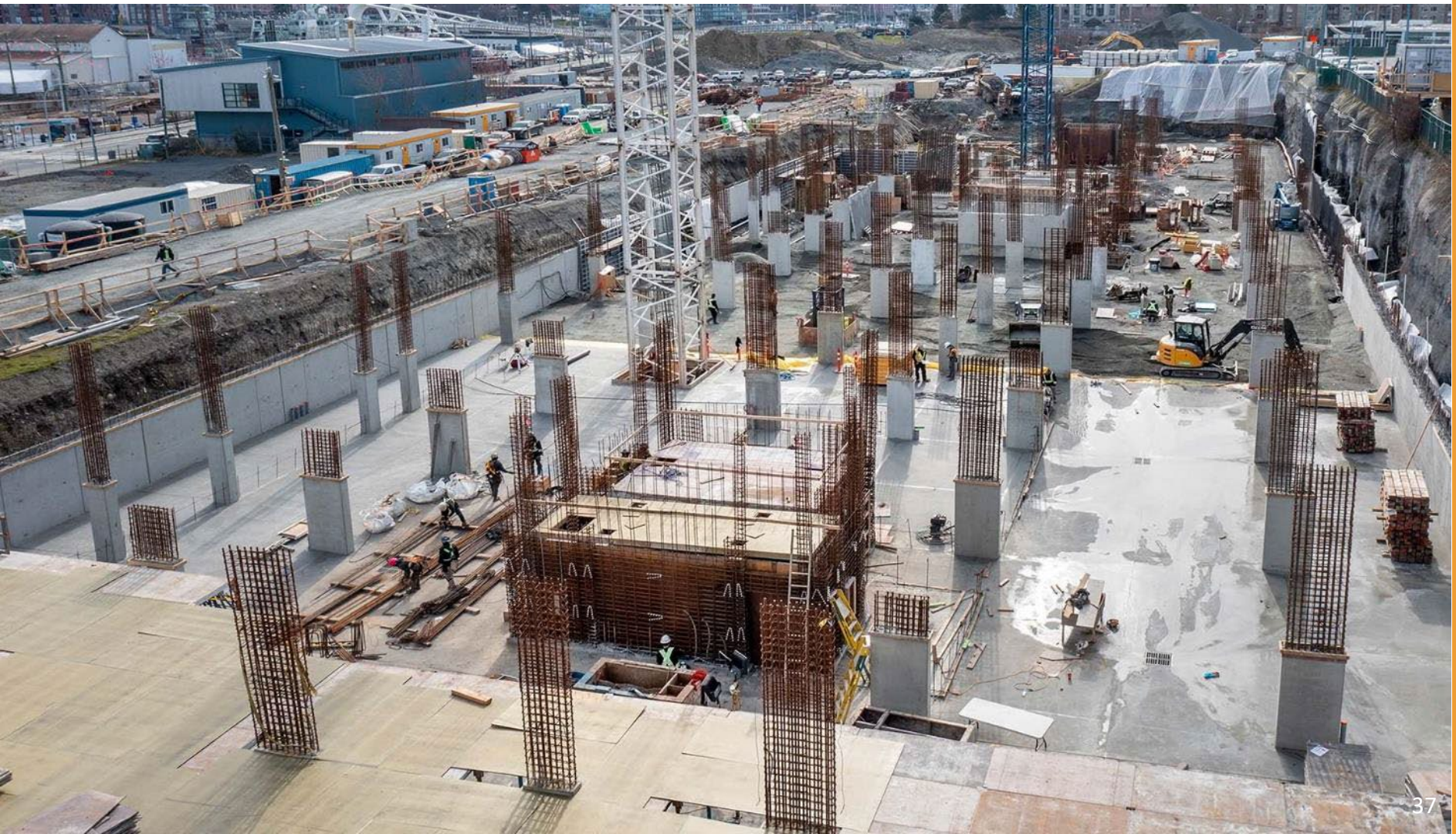
ROZELLE INTERCHANGE
AUSTRALIA



ULMA PROJECTS



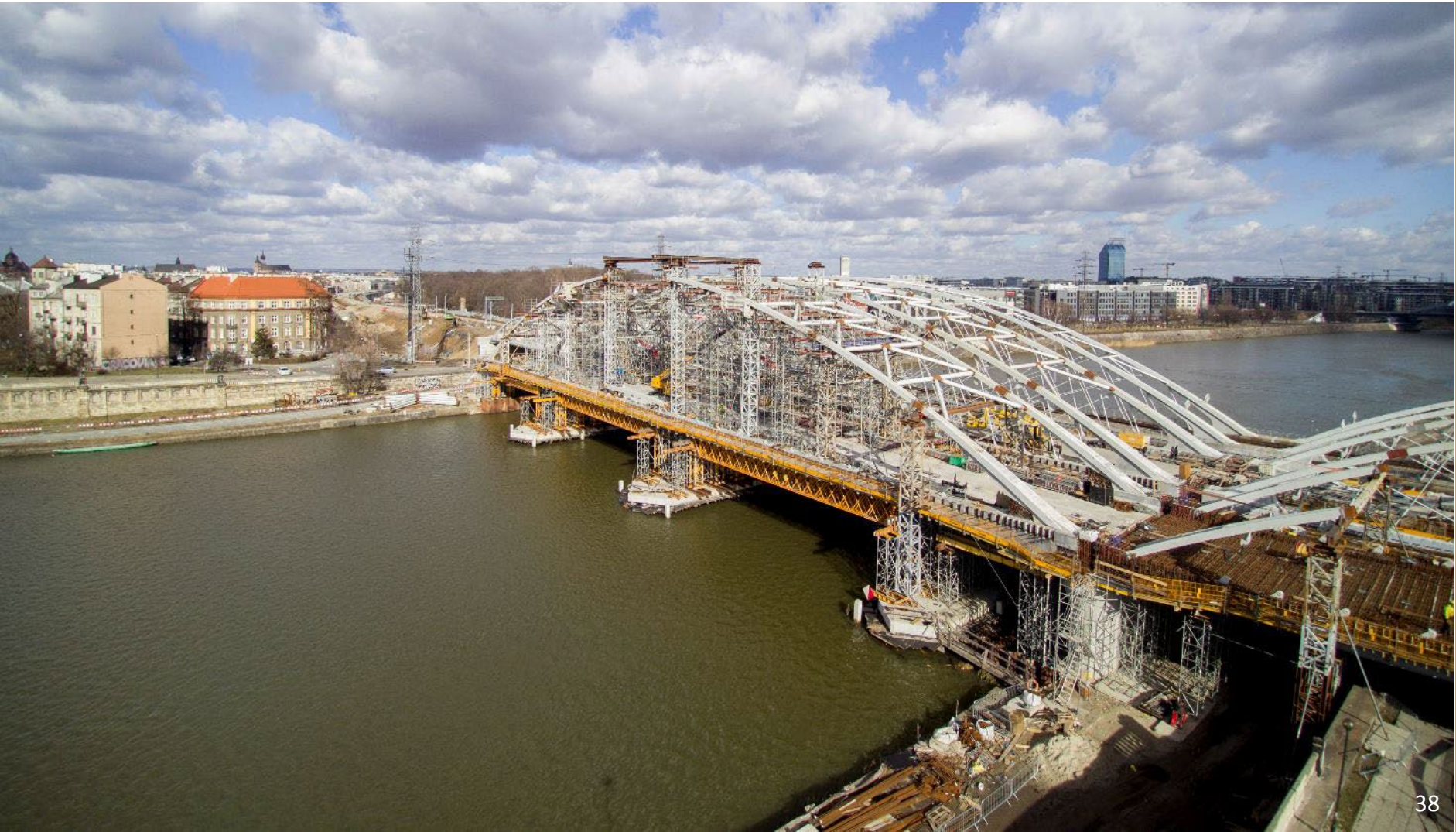
DOCKSIDE GREEN
CANADA



ULMA PROJECTS



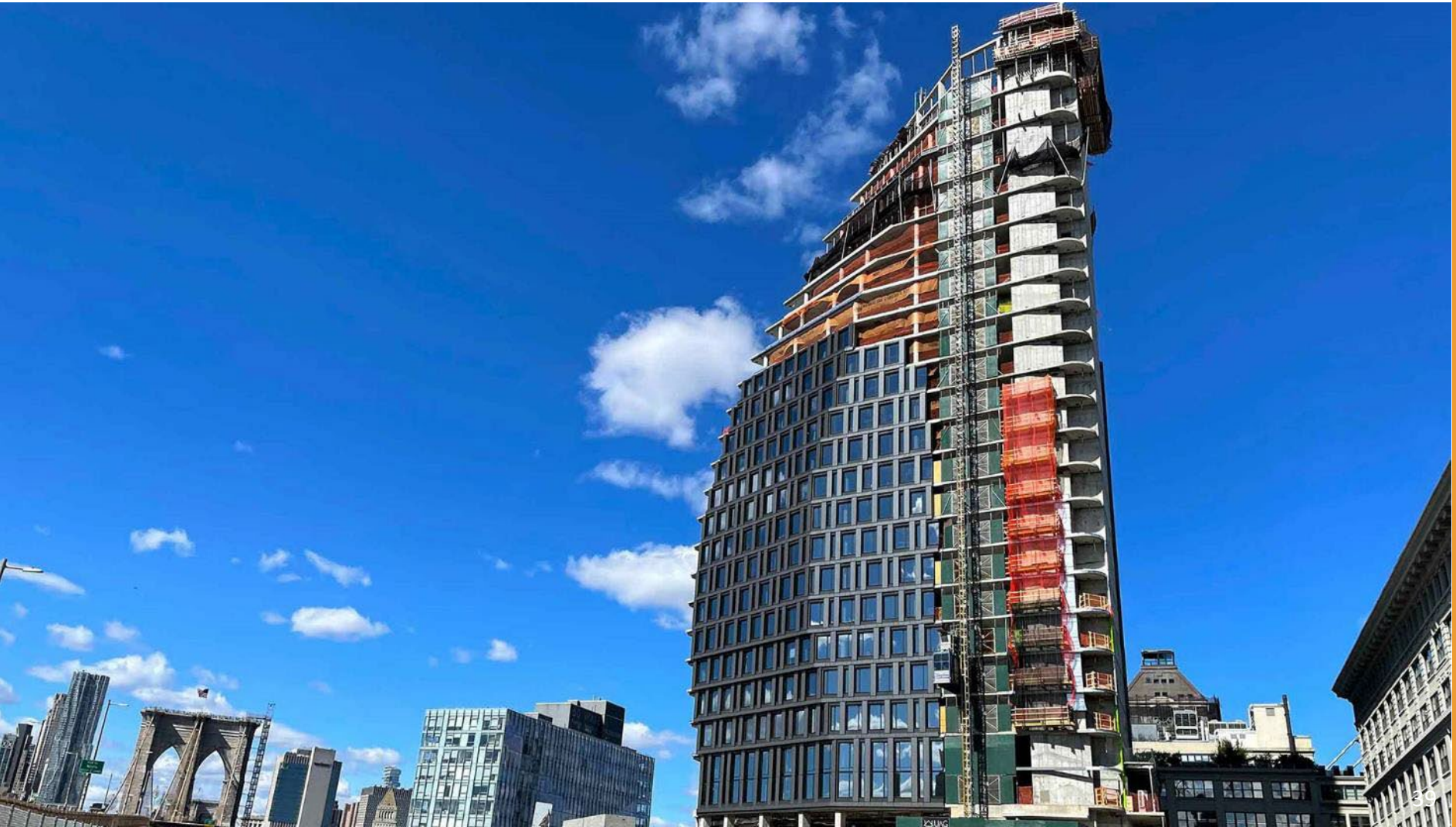
M1 & M3 BRIDGE POLAND



ULMA PROJECTS



OLYMPIA DUMBO
USA



PROYECTOS ULMA



THE ROYAL COLUMBIAN HOSPITAL
CANADA



